

LIVE ABOARD UTILITY / DIVE SUPPORT VESSEL

SPECIFICATIONS

Vessel

Type: Aluminium Catamaran
 Built: Cairns Custom Craft 1999
 Survey: 1B 23+2, 2B 12+2
 Aust Reg No: 856 414

Dimensions

Length overall: 17.34 m
 Beam: 5.4 m
 Depth: 1.78 m
 Draft: 1.0 m

Machinery

Main engine: 2 x Yanmar 6LYZA 440 hp
 Drive: 2 x shaft & propeller
 Genset: 1 x 12 kva
 Genset: 1 x 20 kva 3 phase

Deck Equipment

Hiab/Crane: Fassi M30A.13
 A-frame: 1 tonne SWL
 Deck winch: 1 tonne SWL (3500 m x 12 mm)
 Bauer: HP 9CFM air compressor
 Canopy with: 4 m 15 hp tender
 Fully fendered bow and stern

Speed and Consumptions

Top: 14 kts @ 120 ltrs/hr
 Cruise: 12 kts @ 80 ltrs/hr
 Economy: 10 kts @ 55 ltrs/hr

Bridge Equipment

Plotter: Furuno NAVNET VX2
 Sounder: Furuno 1kw DEFI
 Radar: Furuno 36 NM
 GPS: Furuno DGPS GP 37
 HF radio: Coden 9390
 VHF radio: Uniden MC 950
 Handheld VHF: 2 x Icom IC-m32
 Fleet broadband 150

Capacities

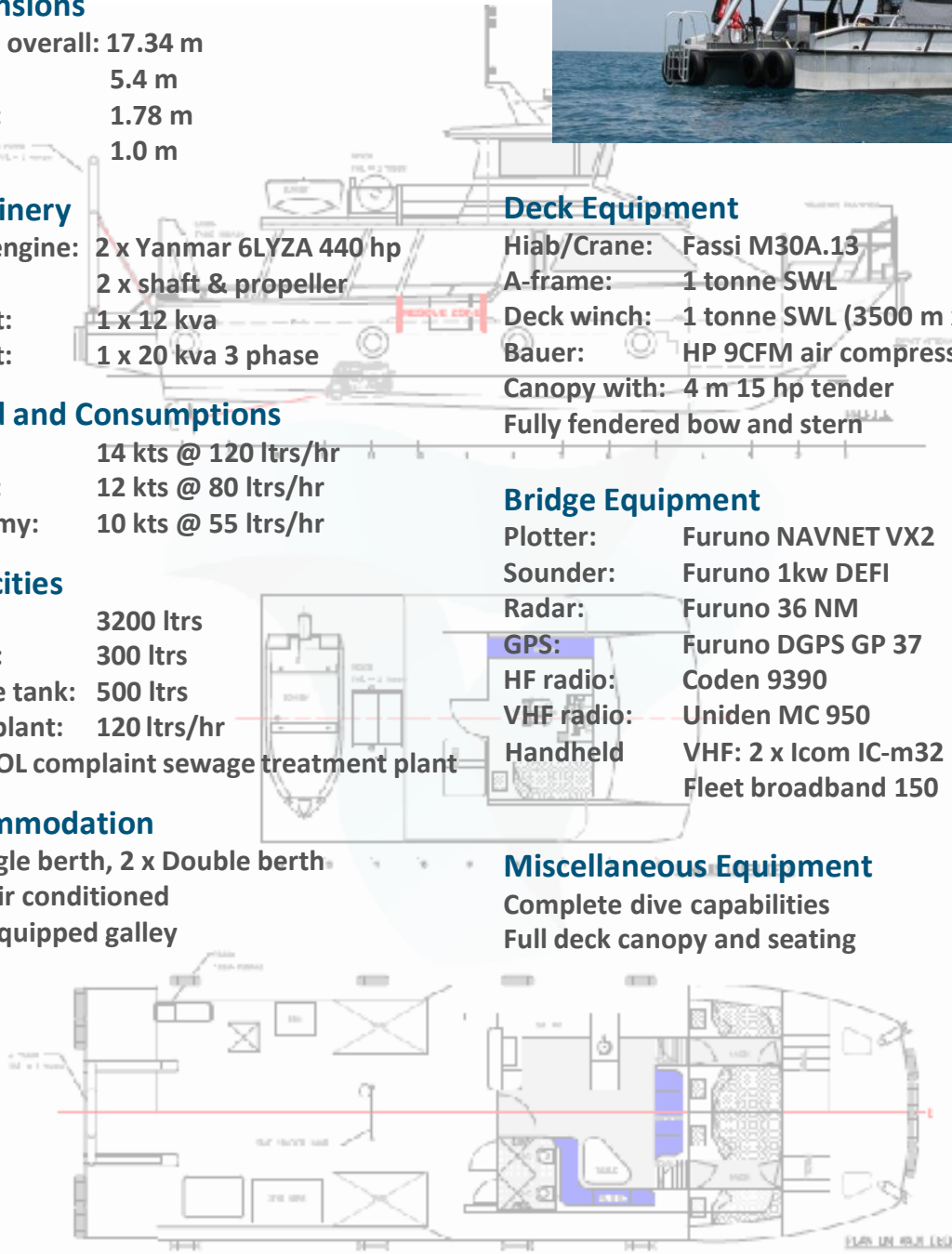
Fuel: 3200 ltrs
 Water: 300 ltrs
 Sullage tank: 500 ltrs
 Desal plant: 120 ltrs/hr
 MARPOL complaint sewage treatment plant

Accommodation

5 x single berth, 2 x Double berth
 Fully air conditioned
 Fully equipped galley

Miscellaneous Equipment

Complete dive capabilities
 Full deck canopy and seating

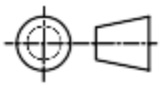


Enquiries

admin@tailoredmarinesolutions.com.au

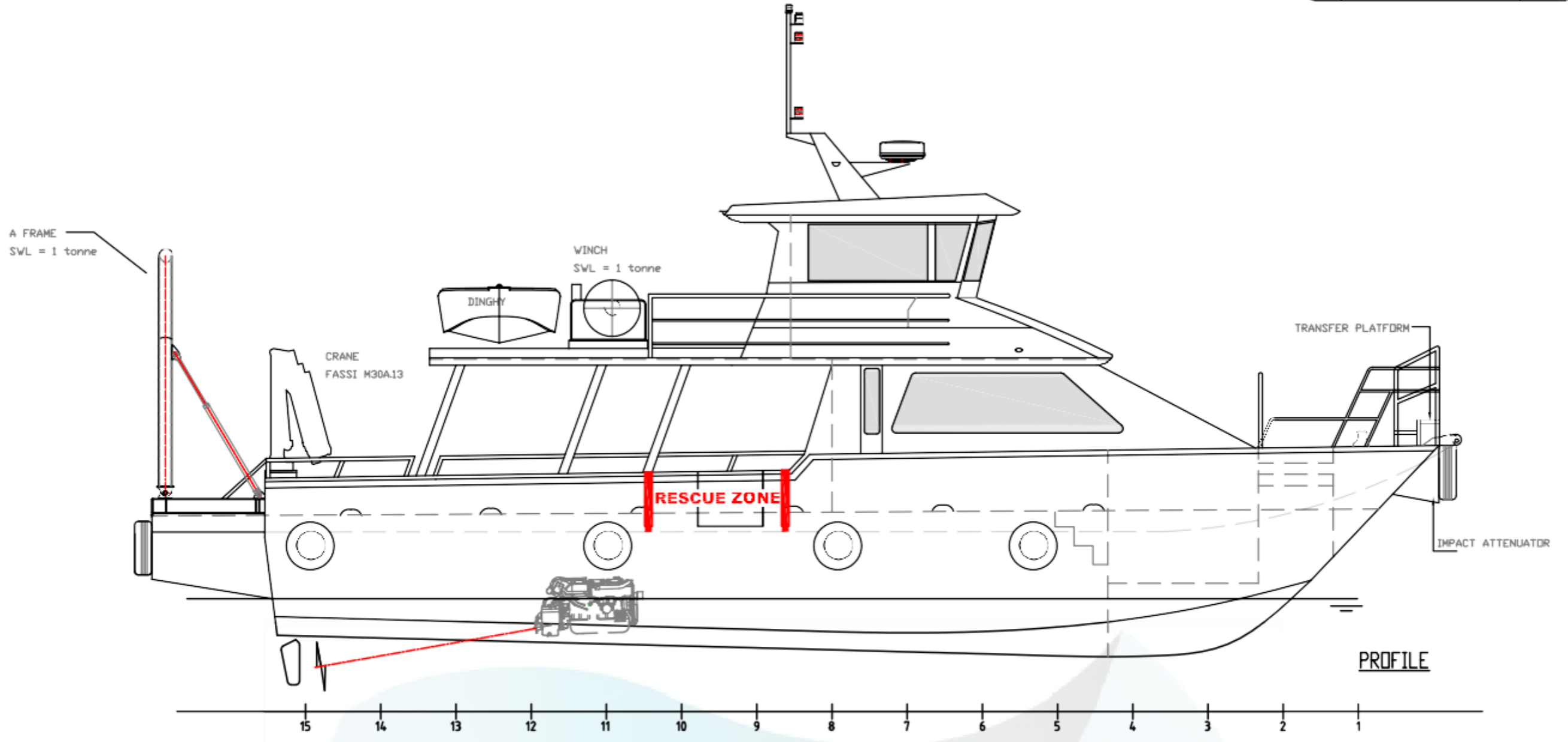
PH: +61 7 4035 6510

www.tailoredmarinesolutions.com.au

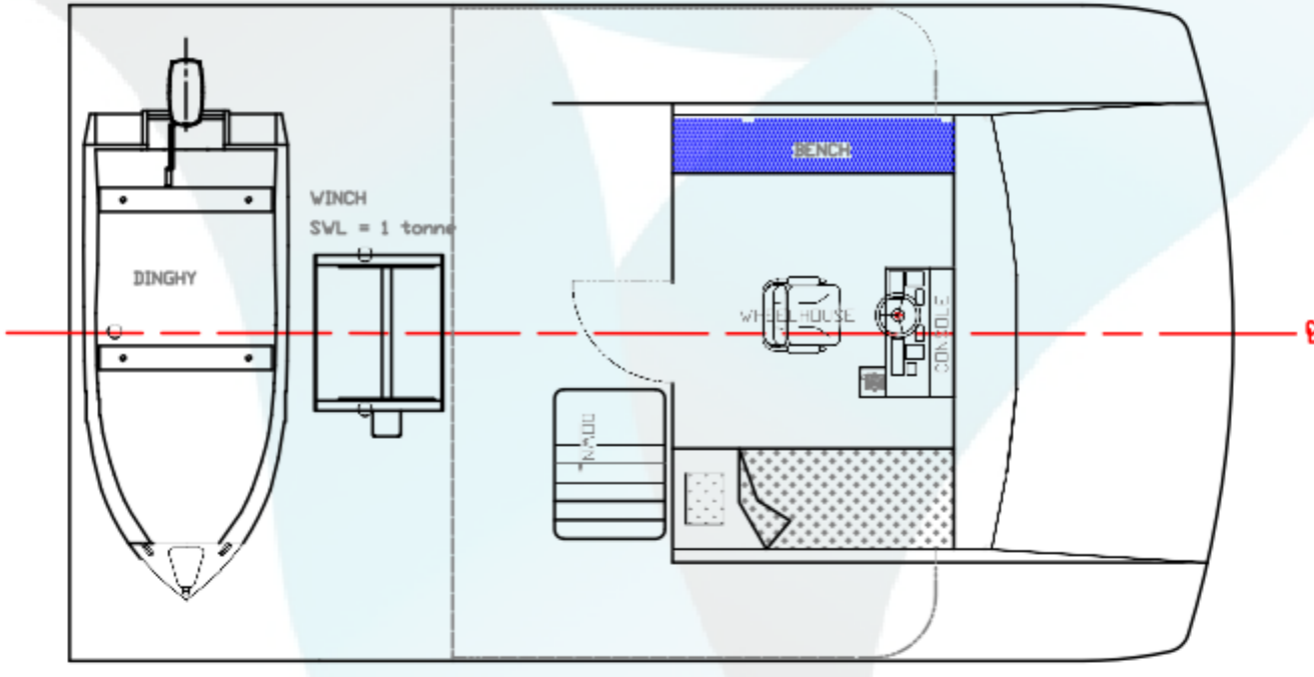


DO NOT SCALE OFF THIS DRAWING
ALL DIMENSIONS ARE IN mm
REMOVE ALL BURRS & SHARP EDGES
IF IN DOUBT ALWAYS "ASK"

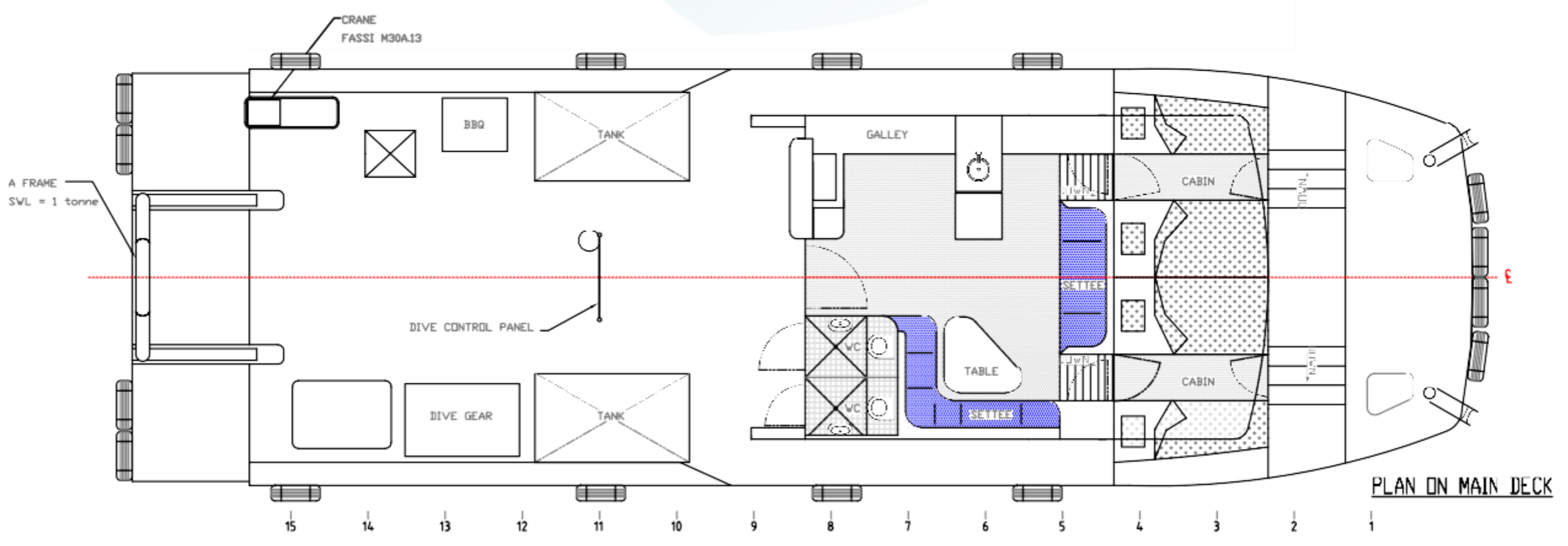
ISSUE	MODIFICATION/REFERENCE	DATE
A		JUNE 2014



PROFILE



PLAN ON UPPER DECK



PLAN ON MAIN DECK

PRINCIPAL PARTICULARS

LENGTH (OA)	17.20 M	PROPULSION	TWIN PROPELLERS
BEAM (MAX)	5.40 M	DESIGN SPEED	14 KNOTS (MAX)
DRIFT (DESIGN)	1.00 M	FUEL CAPACITY	3200 LITRES
CLASS	1B 231C	MAIN ENGINES	TWIN YANMAR 6LY 24 440 HP

Customer	TAYLORED OFFSHORE SERVICES
Project	17.20M OFFSHORE UTILITY VESSEL
Title	DEEPSTAR GENERAL ARRANGEMENT
Scale	1:4C

	18-20 SHOWBRIGHT ROAD LAKELAND NORTH BRISBANE QLD 4030 AUSTRALIA TEL: +61 8 3342 0000 WWW.OCEANTECH.COM.AU
	Drawing No. 4/2-06 Issue 1 OF 1 Issue A