

34.0 m Offshore Support Vessel



Benalla Vessel Specifications:

Length	34.0 m (LOA 12.98 m)
Beam	12.8 m
Drive	2 x Detroit 12v 92TA 1350kw combined
Draft	2.2m
Speed	Max Speed 11 kn / Economic Cruise Speed 8.0 kn
Capacity Fuel Consumption	@ Anchor 34L/hr, @ Cruise 6kn-90L combined/ hr, @ 60% max speed 8kn - 130L combined/ hr, @ 100% max 10kn - 226L combined/ hr
Construction	Steel / Aluminium Catamaran Survey / Research Motor Launch Ship
Build	Eglo Engineering S.A 16.5 t

Equipment:

Deck Cargo	40T Deck Capacity 2t/m2 point load, 150m2 clear space
AFT Deck Winch	30t Hydraulic winch for instrument/ sonar/ tow unit with 500m cable. Heavy-duty aft capstan and other various winch options
Tow Hook	Optional
Crane	Palfinger PK11001MS2.0 3.5t @ 3m and 850kg @ 10m
A Frame	8T SWL luffing & 500kg SWL luffing tow-fish or other launch & retrieval dedicated system
Survey Capacity	900mm moon pool, deployable stabilised pool with full head change options at sea, Side mountable brackets for various arm attachment options. Multiple in hull transducer and instrument mounts. Forward sonar port side tube.
Fuel Bunkering	Yes
Propulsion Systems	Main Engines 2 x Detroit 12v 92TA 1350kw combined
Gearbox	Twin Disc Hydraulic shift with trolling slip
Propulsion	Twin Shaft, fixed blade propellers
Radar	Northrop Grumman & Simrad & Furuno
Plotter	Time Zero Professional Navigator Software SIMRAD Multiscreen Backup with Navionics
GPS	Various
AIS	A Class
Radio	2 x Sailor HF radio
Sounder	Simrad
Auto Pilot	Navipilot 4000

Motor Vessel Benalla

Vessel Specifications



Phone	Satellite handhelds
GMDSS	Yes
Internet	Starlink Global Marine Pack, vessel wide WIFI, data options
Security	CCTV Remote Monitorable
Tank Capabilities	Fuel Capacity 84,000 L Diesel Fresh water 12,600 litres Bunkered plus 5,000L/ day desalinated Blackwater Capacity Sewage Treatment Plant 2.2m3 Class A Marpol Approved
Other	Air-conditioning throughout Toilet x 8 Shower x 8

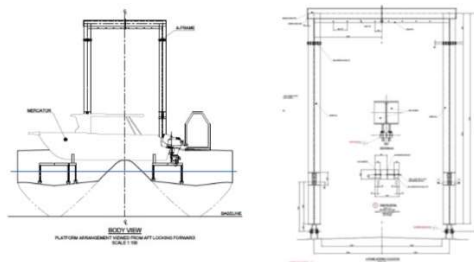
Australian Commercial Certification:

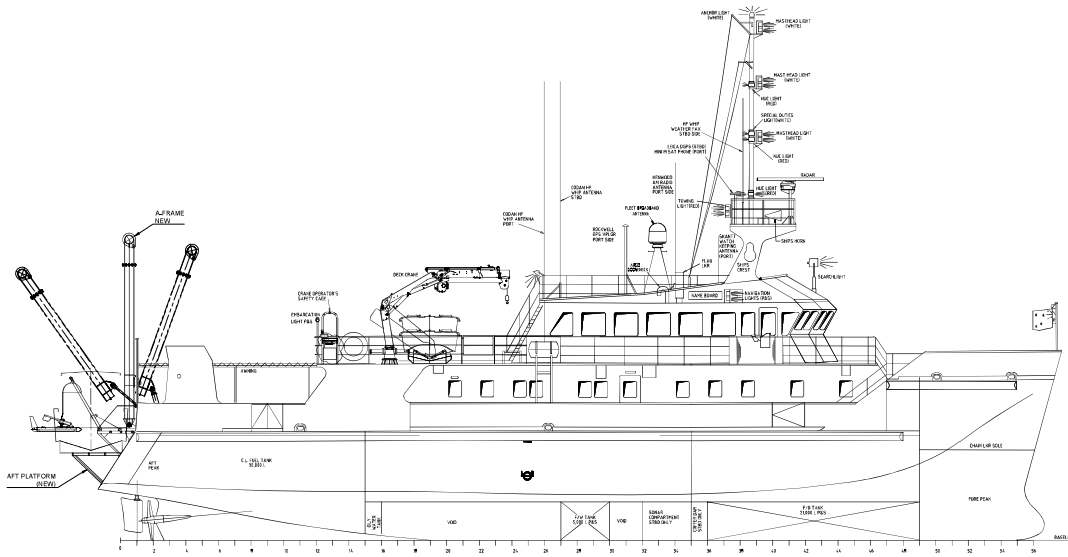
Certified Crew / Passengers	Std crew 6, Master, Mate, Engineer, 2 x GPH, 1 Cook Total std 26 berths, 1 master cabin, 3 Officer & Crew Cabins, 5 cabins twin share single bunks fully air-conditioned, First Aid/ Sickbay Room
Vessel Identification Number	8717324
Operating Class	Unlimited (25) & Australian Coastal (44 + 6*)

Benalla -34.0 m Offshore Support Vessel

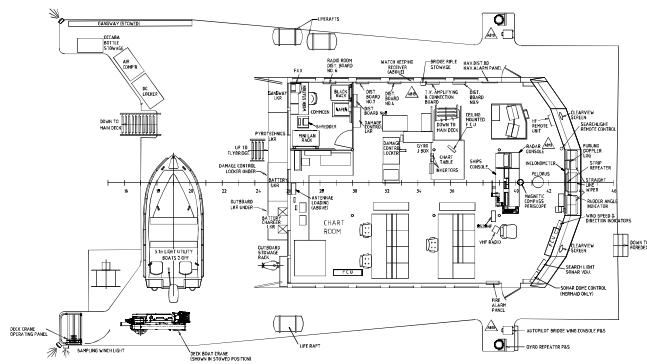


Concept colour scheme for refit start 2024.

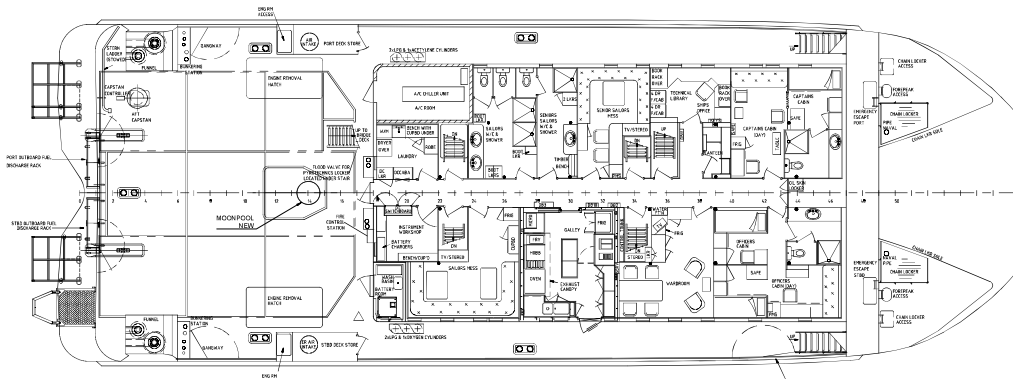




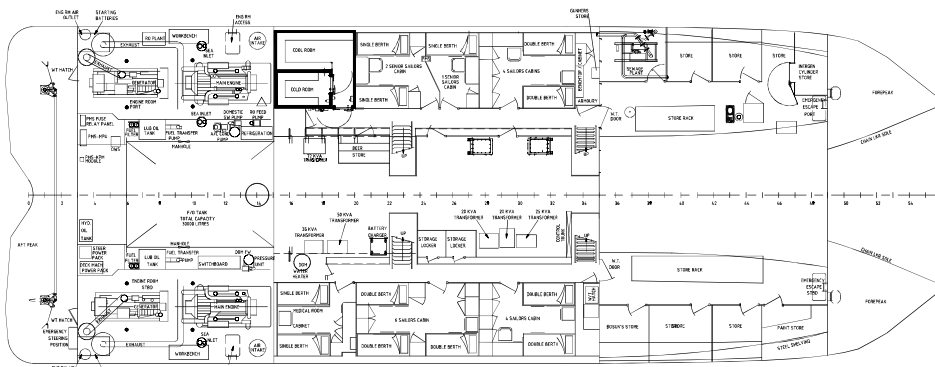
PROFILE



BRIDGE DECK PLAN



MAIN DECK PLAN



BELOW MAIN DECK PLAN

© COPYRIGHT 2014. THIS DRAWING INCLUDES THE INTELLECTUAL PROPERTY RIGHTS AND ANY OTHER RIGHTS RESERVED BY MMD NAVAL ARCHITECTS PTY LTD. NO PART OF THIS DRAWING OR CONTENTS HEREIN MAY BE REPRODUCED OR TRANSMITTED IN ANY FORM OR BY ANY MEANS, ELECTRONIC OR MECHANICAL, INCLUDING PHOTOCOPYING, RECORDING, OR BY ANY INFORMATION STORAGE AND RETRIEVAL SYSTEM, WITHOUT THE WRITTEN PERMISSION OF MMD NAVAL ARCHITECTS PTY LTD. THE DESIGN SHALL BE CONSIDERED AN AGREEMENT TO CONSTRUCT THE VESSEL AS SHOWN HEREON UNLESS OTHERWISE NOTED.



NO.	REVISION	DATE	BY	CHKD.	APP'D.
1	ORIGINAL ISSUE				
2	DETAILS				

MMD
Naval Architects

611 SANBURY ROAD
OCCONOR
VIC 3248
AUSTRALIA

PROJECT: **BENALLA REFIT**
TITLE: **GENERAL ARRANGEMENT**
CLIENT: **MARINE INDUSTRIES VICTORIA**

SCALE: 1:100
DRAWING NO.: 24078-102
REV. A

DO NOT SCALE
THIS DOCUMENT MUST BE REPRODUCED IN FULL TO ENSURE CLARITY
ALL DIMENSIONS IN mm UNLESS OTHERWISE NOTED